

V6 COLOUR

All colour printing

On-line decoration and coding

Modular solutions

Industrial console

Multiple possibilities for
colour blocks

Customised printing height

Integrated message editor



CHARACTERISTICS

- CMYK system for colour printing
- Native resolution of 180dpi or 360dpi
- Multiple densities and contrasts.
- High quality bar codes. GS-1 standard
- Intuitive user environment.
- Actual on-screen preview of the message to be printed (WYSIWYG)
- Oil based and UV LED inks.
- Remote assistance.
- Integration with post-print bar code reader.
- Scripting for full customisation of jobs.
- Multiple integrated colour profiles

ADVANTAGES

- Box customisation in real time.
- Reduction of stock of pre-printed containers.
- Flexibility in short print runs and promotions.
- Practically zero maintenance.
- No stoppages to change consumables.
- Coding and decoration with just one piece of equipment.



V.L. Limitronic, S.L.
Calle Andorra 19
12006 Castellón - Spain
Tel. (+34) 964 562 199
Fax. (+34) 964 503 070
info@limitronic.com

limitronic.com

SPECIFICATIONS

PRINT

Print head resolution:
180 dpi
360 dpi

Speed:
60 m/min @ 360dpi
0.2 - 192 m/min depending on the resolution

Height:
72 mm
140 mm

Maximum length: +100 metres

Densities: 3 levels

Font type:
True Type™, Open Type™ fonts

Character coding: Unicode

Bar codes:
GS-1 standard
EAN/UPC, ITF-14, GS1-128, GS1 Datamatrix, GS1 QR Code

Printing of variable fields:
Of user (customised fields) and automatic fields (expiry dates, shift codes, counters)

Orientation:
Vertical (side of the product)
Horizontal (top of the product)

Encoder:
Automatic speed calibration

ELECTRICS

Power supply:
Selectable by switch
88-132 VAC | 176-264 VAC
47-63 Hz, 1200 W (max)

Inputs (per block):
1 x printing signal
1 x encoder

Outputs (per block) :
2 x programmable
2 x status indicators

Communication ports:
1 x RS-232
1 x RS-422 / 485 / 232 (optional)
2 x 1GB Ethernet
1 x USB
1 x Wi-Fi (Optional)

ENVIRONMENTAL

Work environment:
5 - 45 °C (41 - 113 °F)
Protection:
IP 52 (console)

USER INTERFACE

15" colour touchscreen
Selection of preview messages
WYSIWYG
Diagnostics
Integrated message editor

COMMUNICATIONS

Own communications protocol
Windows™ Driver
Connectivity with external database and ERP
Remote assistance

PRINTABLE PRODUCTS

Porous, glossy, coated cardboard, paper, textiles, wood, plastic, metal, foam, EPS...

OPTIONS

Post-printing bar code verification, alarm beacons, bar code reader for selecting products, external hardware message selection

OTHER

Weight:
38 kg (console)
26 kg (C L70)

Consumables:
UV LED inks



Colours:
Black (high contrast)
Cyan
Magenta
Yellow

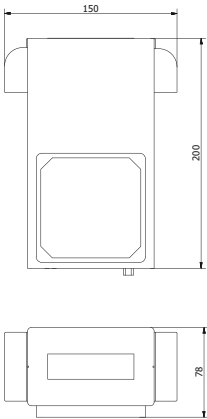
V6 COLOUR
UV LED



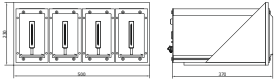
Printing immediately sets
Useful, long life span with low maintenance
Energy efficient

FEATURES

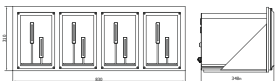
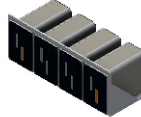
Several heights available
Instant on/off
Safety through double activation input
Adjustable intensity



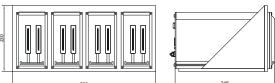
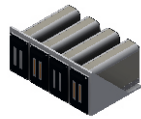
V6 C L70:
180 dpi
70 mm
CMYK



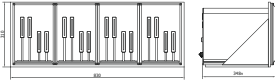
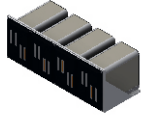
V6 C L140:
180 dpi
140 mm
CMYK



V6 C H70:
360 dpi
70 mm
CMYK



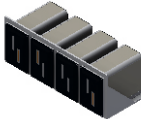
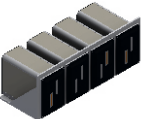
V6 C H140:
360 dpi
140 mm
CMYK



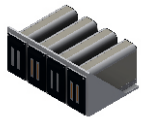
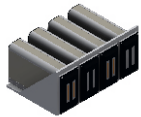
V6 C L70 D:
180 dpi
70 mm
CMYK



V6 C L140 D:
180 dpi
140 mm
CMYK



V6 C H70 D:
360 dpi
70 mm
CMYK



V6 C H140 D:
360 dpi
140 mm
CMYK

